

The UK's only A level
programme on a
university campus



Unique opportunity to study A levels on a university campus

If you are a high-achieving student who is passionate about the sciences, mathematics or economics, the Newton Programme offers you more than a standard A level experience.



A* A* A* A*

Most common set of A2 level results in 2022

82%

of A2 level grades were A*–A in 2022

99%

of A2 level grades were A*–C in 2022

91%

of students who intended to study medicine have successfully gained a place at a medical school since 2011

100%

of students recommended for medical school in 2022 were offered at least one interview

“The Newton A level Programme is highly recommended if you want to pursue a career in engineering, maths or physics. I had a lot of fun in the Further Mathematics class and the teacher was extremely passionate about helping me improve my mathematical abilities.”

Andy, Hong Kong
Progressed to Engineering at the University of Cambridge

Achieved grades:



Exceptional students. Exceptional success stories start here.

"I am always proud of the achievements of our Newton students and particularly how they grow in their independence, confidence and resilience through their time with us. I feel very privileged to have a job that enables me to be part of this global community. I look forward to welcoming further cohorts to study with us here."



Jodi Kent
Newton A level Programme Manager

The Newton Programme is designed for UK and international students who are talented enough to become tomorrow's leading medics, scientists, engineers, mathematicians and lawyers, and produces high rates of success.

It takes its name from one of the world's most famous and influential scientists, Sir Isaac Newton, who acknowledged that his many achievements drew upon the help of his peers and those who came before him. We look forward to welcoming you to our own Newton community and helping you build your own exceptional success story.

"The day I got an offer from the medical school is the most memorable to me. It was a dream I had cherished for a long time, so I couldn't believe it when my dream became a reality. I was very grateful to the many teachers on the Newton Programme who helped me achieve my goal and congratulated me with all their hearts."

Dahye, Korea
Progressed to Medicine
at the University of Southampton

Achieved grades:



“During our CREST Award project, I worked with my classmates to create an anemometer – a device to measure wind speed. I learned a lot of skills such as 3D designing, coding and writing a report. It was an awesome project and gave me ideas for even more creations.”

Loc, Vietnam
Progressed to Computer Science
at the University of Bath

Achieved grades:

A A A B



“Newton’s teaching style is very practical. It allows you to get hands on in different experiments and lab techniques, which is particularly useful if you are pursuing a STEMM career. A particular highlight was achieving a Gold CREST Award for exploring the evolutionary relationship of plants using PCR and electrophoresis techniques.”

Juliette, Chile
Progressed to Biochemistry
at University College London

Achieved grades:

A A A



“There are weekly workshops for every subject which we can bring questions to. Teachers are very patient in answering them and give detailed explanations. They create a joyful environment for learning.”

Nicole, Hong Kong
Progressed to Medicine
at the University of Hong Kong

Achieved grades:

A* A* A* A*



“The Newton Programme has inspired me to become a Clinical Psychologist. I was originally aiming to be a Doctor afterwards, but the psychology programme especially inspired me because it really showed me that anything, not only medical and health related stuff, impacts our lives. Any social interaction, or even just a small movement, could be the key to improvement of our lives.”

Felicia, Hong Kong
Progressed to Psychology
at the University of Bath

Achieved grades:

A* A* A* A*



"My goal has always been to gain a place at a prestigious university in the UK. The Newton A level Programme was recommended to me by my agent as a way of making this happen as they have a strong track record of students progressing to the world's best universities."

Aurelia, Indonesia

Progressed to Actuarial Science at London School of Economics and Political Science

Achieved grades:



"The teachers cover more than the syllabus – they react to the curiosity of the students as well, which means you can explore what it is that interests you. This really helped me solidify my decision to study medicine and made the process of learning even more enjoyable and interesting."

Ryan, Malaysia

Progressed to Medicine at University College Dublin

Achieved grades:



"I chose the Newton A level Programme because of the support and expertise that they offer to prospective medical students. Due to the small class sizes, I was always able to ask questions. The teachers always encouraged me to engage in class and were so supportive throughout."

Kiran, Singapore

Progressed to Medicine at the University of Glasgow

Achieved grades:



"The teachers were really invested in making sure we understood the content and were very willing to answer any questions we had. The passion they had for their respective subjects was infectious and it made me really motivated to learn the subject."

Minyoung, Korea

Progressed to Medicine at Trinity College Dublin

Achieved grades:



Progress to a top university


Below is a selection of some of our top Newton students' results and progression universities.

Home country of student	Result	Destination university	Destination degree
Singapore	A* A* A* A*	University of Cambridge	Engineering
South Korea	A* A* A* A*	University of Cambridge	Natural Sciences
Indonesia	A* A* A* A*	Imperial College London	Biological Sciences
Thailand	A* A* A* A*	University College London	Medicine
China	A* A* A* A*	University of Warwick	Accounting and Finance
Hong Kong	A* A* A* A*	Durham University	Biosciences
Vietnam	A* A* A* A*	University of Leeds	Law
South Korea	A* A* A* A*	University of East Anglia	Medicine
Singapore	A* A* A* A*	Newcastle University	Medicine
Malaysia	A* A* A* A	Imperial College London	Physics
Vietnam	A* A* A* A	Imperial College London	Chemical Engineering
Malaysia	A* A* A* A	Imperial College London	Design Engineering
Russia	A* A* A* A	London School of Economics and Political Science	Finance
Indonesia	A* A* A* B	University of Oxford	Mathematics
Japan	A* A* A*	University of Cambridge	Natural Sciences




Progression to top UK universities

Here are the percentages of Newton students in 2022* who:

 Progressed to a university in the UK:
 Top 5: 27%
 Top 10: 53%
 Top 15: 60%
 Top 20: 80%

 Progressed to a UK medical school:
 Top 20: 100%

 Progressed to science and medicine:
 Top 5: 13%
 Top 10: 50%
 Top 15: 63%
 Top 20: 88%

 Progressed to engineering and computer science:
 Top 5: 100%

 Progressed to business and economics:
 Top 5: 50%
 Top 20: 100%



Imperial College London
 Image credit: Thomas Angus / Imperial College London

* Of students who had a confirmed place at a UK university at the time of publication

Please note: UK rankings were taken from The Complete University Guide 2024

Where are our alumni now?



"The Newton Programme is very comprehensive. It has a very good package of support with not just the small class sizes they offer, but the teachers as well. They really get to know you, so when you're writing your personal statement they can help you refine it, together with giving you advice and opinions about universities. They have years of knowledge about medical schools that require UCAT and BMAT exams, and the amount of workshops that they ran helped us tremendously with improving our grades. The Newton Programme really does offer great support for students wanting to go to medical school."

Y-Y, Singapore

- Newton A level Programme, 2016–2018
- MB, BCh, BAO Medicine, University College Cork



"I came to INTO in 2009 as one of the students in the very first cohort. After graduating in 2011, I moved to London and completed my bachelor's degree at the London School of Economics and Political Science (LSE). After that, I decided to stay in London. The Newton Programme played a very, very significant part in getting me to my career. I treat my studies there as the first step towards my career because I needed the grades, and it was the Newton Programme that led me to my dream of studying at LSE. Newton took me to where I wanted to be, and from there, I grew further. It's still a big part of me."

Thanh, Vietnam

- Newton A level Programme, 2009–2011
- IHS Markit Private Equity Valuation

"We had really good teachers during the Newton Programme who explained things really well, which helped me to prepare for exams. I went to a local school in Indonesia before so it was a big jump to come to an English speaking country, but my teachers helped me with the language and with growing my confidence. I also received mental health support during the long application period!"

Trudy, Indonesia

- Newton A level Programme, 2016–2018
- BSc (Hons) Biology, Imperial College London



"INTO UEA is a beautiful place on a beautiful campus, with lovely people – which is quite a magical feeling. What I liked about the Newton Programme most was how the teachers interacted with the students. They not only teach you about knowledge and skills, but also the philosophy behind a lot of things which was quite enjoyable and helped a lot when doing research. It was also the support that I got from staff and my classmates – we lived in the same corridor, studied together and had fun together. We went through challenges together and grew a strong bond."

Fu (Jerry), China

- Newton A level Programme, 2009–2011
- PhD in Cancer Therapy and Imaging, Imperial College London

"I spent some of the best years of my life at INTO UEA. The Newton Programme has excellent teachers who provided me with a good foundation to pass my exams, get good grades and actually get me into LSE. I also have to mention the excellent support with writing personal statements which provided me with the possibility to get an offer from LSE. I'm very grateful for that. My fondest memory is the exam period because I went to the university library with my friends and it connected us a lot."

Polina, Russia

- Newton A level Programme, 2017–2019
- BSc (Hons) Finance, London School of Economics and Political Science (LSE)



Your opportunity to excel

You could be the next student to achieve exceptional A level results and gain a place at a top university, such as Cambridge, Imperial, London School of Economics and Political Science (LSE), University College London (UCL) and medical schools in the UK.

What is special about the Newton Programme?

- Cambridge Assessment International Education (CAIE) A levels are recognised by universities globally as one of the most prestigious of all A level awarding bodies.
- Professional guidance when you apply to top UK universities and medical schools, including interview preparation.
- Classes and workshops by experienced teachers, many with research backgrounds who are experts in their field.
- Our impressive INTO Centre, offering excellent living and learning facilities, means that you can focus on your studies.
- Support in obtaining work experience and enhancing your university application and CV.
- Inspiring enhancement activities to aid your learning and boost your employability.

Why should you study A levels on a university campus?

Studying A levels on a university campus will support a natural, confident progression to an elite university. You will enjoy a programme of enhancement activities to help you make the most of our university campus location, with opportunities to attend workshops and guest lectures with leading university academics.

With access to UEA facilities, including the 24/7 library, clubs and societies at the Students' Union and sports facilities at the Sportspark, you will meet with current undergraduates and be part of the university's community.

By the end of your A levels, you will be a more independent learner with the confidence and maturity to succeed in an undergraduate degree programme at a top university.



“Being a Newton student means living and studying on a university campus, which opens up all the academic and non-academic facilities to you. You can join clubs and societies, get involved with volunteering opportunities, participate in university events, study in the large library and exercise at the Sportspark.”

Samir, Russia
Progressed to Medicine
at Aston University

Achieved grades:



Reach your true potential



The Newton Programme offers you a direct route to a university of your choice. It has been designed to address all aspects of university preparation and to support you in becoming exceptional. This is your chance to join other gifted and ambitious students who, like you, are focused on the highest level of success.

Cambridge Assessment International Education (CAIE) A levels

CAIE A levels are welcomed by the world's leading universities, including Oxford, Cambridge, LSE, Imperial and UK and Irish medical schools. These universities recognise CAIE A levels as the highest quality preparation for entry to their courses. Many high-ranking universities in the US also welcome A level candidates and award credits for high grades.

Encouraging independent learning

Regular homework is compulsory and you will be expected to spend a similar amount of time each week in private study as you do in class.

Exam preparation

Working through past papers will build your confidence as you develop your exam technique. Your teachers will help you understand the style of CAIE exam questions and you will have extensive practice in answering questions under timed conditions.

Feedback on your progress

We value the trust your parents place in us to look after you, and our A level provision is structured to do just that. You will be allocated a Personal Tutor who will be the main point of contact for you and your parents. Along with your teachers, they will be on-hand to:

- discuss your academic progress
- offer guidance on study skills and producing high-quality work
- help with any welfare issues

You and your parents will receive regular reports throughout your time here. These reports cover your academic performance and work ethic.

Enhance your study skills

You will take part in a study skills programme to help you develop effective study techniques, including organisational skills, planning and time management. These skills can determine the difference between 'good' and 'excellent' grades.



English language support

Any student requiring a high-level IELTS for degree study will be supported in improving their spoken English and academic writing.

Students will join a tutorial group which meets once a week and focuses on developing your interpersonal, communication and study skills.

Your application to university

You will receive comprehensive training on how to complete your UCAS application for UK universities. We also support applications to international universities if you choose to study at an institution outside of the UK.

With guidance, support and advice from your Personal Tutor and Programme Manager, you will feel confident in producing strong university applications and preparing for any interviews.



Extracurricular activities to inspire your learning

You will take part in a range of exciting academic enrichment activities throughout your programme to reinforce your theoretical knowledge, develop your awareness of topics outside of the A level syllabus, and maximise your chances of accessing the most competitive of undergraduate degree courses.

Presentations from university academics

We love to invite UEA academics to our learning spaces to share their research and enhance your learning. You'll experience university-style lectures and workshops under the supervision of university academics, sometimes in UEA's laboratories. Previous sessions have covered:

- cancer research
- the Human Genome Project
- electrochemistry

Real-world experience

Where possible, you'll be supported in identifying and securing internships, voluntary placements and work placements. These may be in the UK or abroad, and there are also opportunities with charities. Former students have worked with:

- engineering companies
- hospitals
- veterinary practices
- science research laboratories
- dental practices

Educational trips*

To help with your understanding and put your learning into a real-world context, you may visit places of scientific importance, such as:

- John Innes Centre in Norwich
- Codebreakers Museum at Bletchley Park
- Sanger Centre in Cambridge

Take part in competitions

Make the most of the knowledge you will gain by entering competitions such as the UK Physics, Chemistry and Biology Olympiads and the UKMT Team Maths Challenge. You can compete against other UK and international students, gaining confidence and study skills in the process.

Mathematics enhancement

If you hope to study mathematics, engineering, economics or a related subject, we will help you develop your mathematical and problem solving skills through weekly mathematics enhancement classes. You will focus on the skills needed to prepare for your Sixth Term Examination Paper (STEP) and an interview in this field.



Impress top universities with an Extended Project Qualification (EPQ)

We offer the chance to work independently on a project of your choice. Guided by a project tutor, you will make full use of the university's research library and expertise.

This recognised qualification can give you a real advantage when applying to top universities and performing at selection interviews, demonstrating your desire to extend your knowledge beyond the curriculum and develop valuable research skills.

Engineering and business enhancement

Where possible, students with an interest in engineering, business and non-medical science will work towards a CREST Award. This well-respected and recognised national award requires excellent project management, teamwork and communication skills in order to complete a research project.

Find out more about the CREST Award: crestawards.org/what-is-crest

Preparation for aspiring medics

To support students interested in studying Medicine, senior academics from Norwich Medical School deliver presentations offering valuable insights into the world of medicine and health. Topics covered include:

- medical school applications
- introduction to clinical skills
- how to succeed at medical school interviews
- making the most of medical work experience

You will also have Medical Ethics classes and receive advice on applying to UK medical schools and careers in medicine and health.

Medical work experience

We arrange medical placements wherever possible** at the Norfolk and Norwich University Hospital. Here, you may observe high-ranking consultants at work in departments such as Anaesthetics, Endoscopy, Gastroenterology, Orthopaedics, Plastic Surgery, Radiology, Rheumatology and Urology. We also support with securing placements elsewhere.

* Subject to an additional fee

** Subject to satisfactory performance in class and at selective interview

Meet your teachers

The teachers on the Newton Programme have a wealth of academic and industry experience in a range of subject areas. Find out about some of our teachers below.



Jodi Kent

Newton A level Programme Manager

- Graduated with First Class MSci Chemistry from the University of Nottingham.
- Eight years' experience as a qualified accountant at PwC.
- Over 12 years of high school teaching and tutoring experience, supporting students in university applications.



Rob Gillespie

Programme Coordinator and Chemistry Module Leader

- Graduated with BSc (Hons) Chemistry and a Postgraduate Certificate in Education from UEA.
- Has taught Science and A level Chemistry for over 20 years.
- Extensive experience as a Chemistry tutor for training new teachers at UEA.
- A level Chemistry examiner.



Beverley Lewis

Biology Module Leader

- Graduated with BSc (Hons) Biology from the University of Bristol.
- Extensive experience as a biologist and conservationist.
- Published author of several books.
- Has taught Biology for over 10 years.



Dr Maya Elliott

Economics Module Leader

- Graduated with a PhD in Experimental Economics from UEA.
- Teaching experience at undergraduate level.
- A level Economics examiner for several exam boards.



Chris Wilkinson

Mathematics Module Leader

- Graduated with BSc (Hons) Computer Science and a Postgraduate Certificate in Education from UEA.
- Has taught A level Mathematics and Further Mathematics for over 20 years.
- Mentored trainee teachers on UEA's PGCE programme.
- A level Mathematics examiner.



Witold Rozak

Physics Module Leader

- Graduated with MSc Physics, specialising in teaching physics, from the University of Rzeszow, Poland.
- Taught A level Physics in technical and comprehensive high schools in Poland.
- A level Physics examiner.

"The Newton Programme creates a unique learning environment where the small classes and dedicated teachers combine to ensure each student achieves their potential. Having worked on the programme since its inception, I am extremely proud of all we have achieved."

Dr Maya Elliott, Module Leader for Economics

Expert preparation for your dream university

We know how important it is that you go on to study at a leading university that is right for you. You will benefit from individual support throughout your A level studies to help you with your applications to top UK universities.

Applying to university

You will receive practical advice on applying to top universities, including Oxford, Cambridge and Imperial College London. Your Personal Tutor will guide you through the process of:

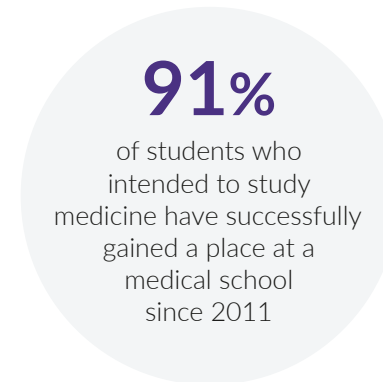
- writing your university application
- writing your personal statement
- applying through UCAS
- preparing for interviews

You will also have opportunities to visit UK universities and discuss your applications with academics and admissions staff, so you can be certain to make the right choice for you.

Applying to medical school

To support your application to a medical-related programme, you'll take part in a unique schedule of enhancement activities:

- role-playing and problem-based learning in Medical Ethics workshops
- advice and support from a dedicated Medical Ethics teacher
- support in seeking work experience placements
- interview preparation sessions
- presentations from senior medical academics, providing valuable insights into the world of medicine
- advice from current medical school students
- volunteering opportunities to gain experience in working with the British public



Test preparation

You may have to take additional tests as part of your university admissions process. You will be fully supported in taking these tests with tutorials and practice sessions, ensuring that you achieve your best. Common tests include:

- **University Clinical Aptitude Test (UCAT)**
– taken by students applying to certain medical or dental schools
- **Biomedical Admissions Test (BMAT)**
– required for students applying to certain medical, dental or veterinary science schools
- **Sixth Term Examination Paper (STEP)**
– commonly taken by students applying for mathematics courses
- **Law National Admissions Test (LNAT)**
– commonly taken by students applying for law courses
- **Physics Aptitude Test (PAT)**
– commonly taken by students applying for physics and engineering courses

“We are proud of our high rate of progression to study Medicine in the UK. Excellent links to the UEA Medical School and the University Hospital have facilitated this. My role is to support potential medical applicants who attend preparation classes, helping them to gain the skills and experience necessary to achieve well in their UCAT and BMAT tests and at interview.”

Carol Ferris
Module Leader for Medical Ethics



Newton Programme

A levels

The Newton Programme offers A levels in the core sciences, mathematics, psychology and economics. Both a five-term and a six-term programme are offered, allowing progression to an undergraduate degree at a top university in the UK or abroad.

An international A level syllabus

Almost a million students in 160 countries throughout the world take Cambridge Assessment International Education (CAIE) AS and A levels every year. They incorporate the best qualities of UK A levels, while meeting the needs of international students.

Discover an education that gives you the skills you need for life, helping you achieve during your A levels, at university and at work.

You will be supported through the academic transition to CAIE A levels and learn essential study skills like planning and time management.

Globally recognised qualifications

CAIE A levels are internationally recognised, accepted by top universities and global employers around the world.

Every UK university accepts these prestigious qualifications, as well as 600 institutions across the US including all of the Ivy League universities, plus universities in many other countries such as Canada, Australia, Singapore, South Africa, Germany and the Netherlands.

Programme and pathway options

You have two programme options to choose from:

- a six-term programme starting in September
- a five-term programme starting in January

The same academic content is taught on both programmes; however, the pace of the six-term programme is slightly gentler than that of the five-term programme.

Students on the six-term programme have more time to settle into 'Newton life' and will also receive additional support and extracurricular enhancement activities during their first year of study, with an emphasis on study and lab skills.

A level programme structure

You will choose four subjects in your first year of study. Most students will continue with all four subjects for their final three terms.

If both you and your Personal Tutor feel it is more appropriate, you may be allowed to continue with just three subjects for the final three terms.



"Studying here isn't just for the grades, it's the experience of being at a university. Grab every opportunity you can and see for yourself if UK university life is right for you."

Edmund, Hong Kong
Progressed to Architecture at the University of Leeds

Achieved grades:



Key facts

Start dates

September or January

Programme length

5 or 6 terms

Class hours

20 hours per week minimum, assuming four A levels are studied

Age requirement

16 years or older when you arrive

Academic entry requirement

Newton Programme candidates must demonstrate potential for entry to top-ranked universities, such as the University of Oxford, the University of Cambridge, US Ivy League universities or medical schools.

For entry onto the programme, you must have completed your education to Year 11 level, achieving the equivalent of six 6/B grades at GCSE.

Students intending to progress to Medicine, Dentistry or Veterinary Science:

7-9/A-A* at GCSE (or equivalent) in at least six subjects, including mathematics and science.

We would not advise that any student attempts to gain entry to a UK medical school without meeting this minimum requirement.

English language entry requirement

5 term: IELTS 5.5 (with a minimum of 5.5 in writing and no less than 5.0 in all other subskills) or equivalent.

6 term: IELTS 5.0 (with a minimum of 5.0 in all subskills) or equivalent.

Students intending to progress to Medicine, Dentistry or Veterinary Science:

5 and 6 term: IELTS 6.0 or equivalent.

If you are applying for a Student visa, you must have an IELTS for UKVI. If you have questions about this test, our experienced team will be happy to help you. Email your questions to: SELT.Help@intoglobal.com

Subject pathways tailored to your career goals

You can choose from several subject pathways. Use the table below to select the pathway that corresponds to the undergraduate degree you plan to study at university.

Recommended A level combinations and additional subjects for each pathway

Pathway	Compulsory A level subjects			Optional subject(s)	
Science and Medicine	Mathematics	Chemistry	Biology	Physics	Psychology
Engineering and Mathematics	Mathematics	Further Mathematics	Physics	Chemistry	Economics
Economics, Business and Actuarial Science	Mathematics	Further Mathematics	Economics	Physics	Psychology

Your sample weekly timetable

The table below provides an example of what your weekly timetable may look like on the Science and Medicine pathway. Please note that this is only a sample timetable. You will be given your real timetable during the orientation week at the start of your programme.

Sample six-term Science and Medicine timetable

	Monday	Tuesday	Wednesday	Thursday	Friday
08:30					
09:00	Chemistry		Mathematics		
09:30					
10:00					
10:30					Chemistry
11:00		Physics/ Psychology		Biology	
11:30			Optional subject workshop		
12:00					
12:30					
13:00					
13:30					
14:00	Mathematics	IELTS preparation class	Chemistry	Mathematics	Physics/Psychology
14:30				Physics/Psychology	
15:00					
15:30	Optional subject workshop	Biology	Medical ethics	Optional subject workshop	
16:00					
16:30					
17:00					
17:30				Introductory 6 week sports programme	
18:00					



Biology

Topics on the CAIE Biology syllabus include:

- cell structure, membranes and transport
- enzymes
- nucleic acids and protein synthesis
- transport in plants and mammals
- infectious disease and immunity
- photosynthesis
- homeostasis
- selection and evolution
- biodiversity, classification and conservation
- genetic technology



Chemistry

Topics on the CAIE Chemistry syllabus include:

- atoms, molecules and stoichiometry
- chemical bonding
- states of matter
- chemical energetics
- electrochemistry
- reaction kinetics
- the Periodic Table: chemical periodicity
- organic chemistry
- polymerisation
- organic synthesis



Economics

Topics on the CAIE Economics syllabus include:

- basic economic ideas and resource allocation
- the price system and the micro economy
- government microeconomic intervention
- the macro economy
- government macro intervention



Mathematics

The CAIE Mathematics syllabus covers:

- pure mathematics
- mechanics **or** probability and statistics



Further Mathematics

Only available to students who study Maths to the full A level. It's divided into two papers:

- pure mathematics
- mechanics and statistics



Physics

Topics on the CAIE Physics syllabus include:

- physical quantities and units
- waves
- kinematics
- forces, density and pressure
- work, energy and power
- temperature and thermodynamics
- electricity and electric fields
- particle and nuclear physics
- magnetic fields
- quantum physics
- astronomy and cosmology



Psychology

The CAIE Psychology AS level syllabus covers 12 core studies using a range of research methods. The A2 level syllabus covers two of:

- abnormality
- consumer behaviour
- health
- organisations

Giving you the right support

We understand that choosing to study at INTO UEA will take you on a life-changing journey, so we offer you an extensive support network. We take pride in the support we offer through the wealth of experienced teaching staff, personal tutoring system, regular contact with parents and dedicated Under 18 Welfare team.

Before you arrive in the UK

Once your offer has been accepted, you will receive a pre-departure guide containing information to help you prepare for travelling to the UK and your arrival in Norwich. You will also receive a pre-arrival academic reading list.

Meeting you at the airport

We provide an airport pickup service from Norwich International Airport and major London airports (required for all students under the age of 18) at an additional charge, so you won't have to worry about how to get to campus.

Student attendance monitoring

Good attendance is key to academic success, so you're expected to attend all academic sessions. Your attendance is monitored carefully – where not satisfactory, we will support you through our attendance procedure.

Support from INTO UEA

The Student Services team will help you settle into student life in Norwich and be there to help with any non-academic issues. We're dedicated to ensuring that you feel totally supported with:

- a comprehensive induction during your first week, including a guided tour of the city
- 24/7, 365 days a year student support
- trained welfare staff and residential wardens
- workshops and individual appointments to help with visa and immigration queries
- support for students with disabilities
- a social programme to help you make friends

Support from the university

As well as the normal system of study advisers and tutors, the University offers additional support services. These include:

- extensive chaplaincy services
- the University Medical Centre
- CareerCentral careers advice service
- UEA Student Support Services

Students under the age of 18

Studying overseas is a big step for anyone, but even more so for younger students. If you are under the age of 18, we will check in on you each day at your student residence.

We also ensure that all of our staff complete safeguarding training to support the welfare of students under the age of 18.

For more information on our policies, visit intostudy.com/uea/terms or request a copy of our Under 18 Policy.

“Everybody is very supportive at INTO UEA. I always felt like I could talk about anything with the Welfare team. It went beyond just talking, you could feel that they actually cared. And it's not limited to the Welfare team – every member of staff will give students attention. The energy is very positive.”

Valeria, Russia

Achieved grades:

A* A B



Your home from home

You will feel at home here in no time, living with your new classmates in student residences within the INTO Centre on UEA's beautiful campus. If you are under the age of 18, you will live on a corridor with additional entry security.



Everything you need

- Spacious single study bedrooms with an en suite shower room.
- Meal plan in our international restaurant.
- Modern communal kitchens.
- A bedding pack, including a single duvet and cover, a pillow and pillowcase, a sheet and a mattress protector.
- Bed linen changed every two weeks.
- Room cleaned regularly.
- 24/7, 365 days a year student support.
- Dedicated A level study room.
- Access to nearby laundry facilities.
- Relaxation areas throughout.
- Access to games and satellite TV.
- Designated wheelchair-accessible rooms situated near lifts and entrances.

Dine in our on-site restaurant

As a Newton A level student, you will enjoy at least two meals a day in our restaurant.

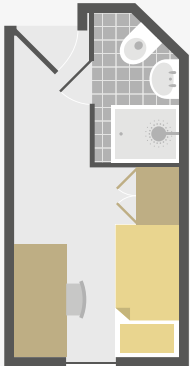
Catering to all dietary requirements (including vegetarian), there's a wide choice of different dishes each day – all of which are halal certified.

The meals are nutritionally balanced and will help you to stay healthy and alert in class.

Popular dinner choices include:

- stir fries, such as chop suey
- Thai, Japanese and Indian curries
- battered fish or burgers with chips
- pasta, lasagne and risotto
- soups, such as tom yum soup

In addition to the meal plan, you can purchase further meals in the restaurant or snacks from the coffee cart. You will also share a kitchen with your classmates to cook meals together.



Private en suite bedroom

- Within the INTO Centre
- En suite bathroom
- 24/7 staff
- Laundry facilities
- Wi-Fi
- Bedrooms cleaned regularly

2nd

safest university in the East of England

(The Complete University Guide 2023)

96%

of students feel safe and secure living at INTO UEA

(INTO Annual Student Experience Survey 2023)



Scan the QR code to find out more



Your guide to campus life

Involvement in non-academic activities will help you adjust to life in the UK, improve your English and make new friends.

Social programme

Our social programme offers a range of activities for you to enjoy. These may include:

- tour of London
- punting in Cambridge
- trips in the local area, such as Holkham beach
- excursion to Edinburgh
- trips to Harry Potter Studios and theme parks
- quiz nights, film showings and bowling

Stay active in the Sportspark

UEA has an extensive sports complex on campus. As a Newton student, you will have full access to the Sportspark*, including:

- 50-metre swimming pool
- indoor fitness centre
- badminton, basketball and volleyball courts
- eight-lane athletics track
- three squash courts
- climbing wall with bouldering cave
- martial arts studio and gymnastics centre
- two floodlit artificial-turf hockey pitches
- Soccerpark with seven pitches
- six floodlit tennis courts

Clubs and societies

Joining one of the 200+ clubs and societies at the university is a great way to make friends with other students. Clubs and societies include:

- international societies, including Chinese, Malaysian, Korean, Hong Kong, African, Indian, Russian, Singaporean and Vietnamese
- sports, including basketball, dance, football, tennis, trampolining and volleyball
- music and drama
- debating and model UN
- photography
- film and anime

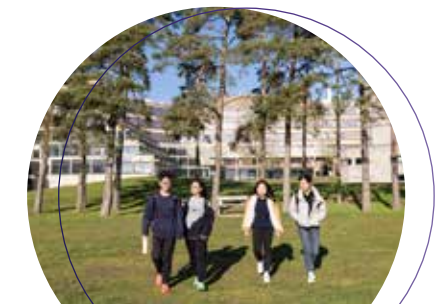
Get involved

With our 6-week introductory sports programme, you will have taster sessions of a range of sports as you get to know your peers.

You can also join classes for all levels of fitness in many activities, including tennis, archery, trampolining, gymnastics and swimming, or have a programme designed by a sports scientist.



* Sportspark membership is at an additional cost



“The UEA campus is a nice place to walk around, especially near the lake. It’s really pretty around there. You can find all of the facilities you need on campus and none of them are very far from the INTO building. It was useful to find Asian food in the SU shop, it feels like a really diverse campus.”

Jay, South Korea
Progressed to Medicine at the University of Birmingham

Achieved grades:



**UK
Top 10**
for clubs and societies
(StudentCrowd 2022)

Campus map



JOHN INNES CENTRE

COLNEY LANE PLAYING FIELDS

SAINSBURY CENTRE

THE LIBRARY

THE CAMPUS KITCHEN

THE STREET (SHOPS, LAUNDRETTE)
STUDENT SERVICES

THE SQUARE
STUDENT UNION

EARLHAM HALL

EARLHAM PARK

THE ENTERPRISE CENTRE

SPORTSPARK

INTO CENTRE AND ACCOMMODATION

Norfolk and Norwich University Hospital

Bob Champion Research and Education Building

City Centre



18 mins



20 mins



45 mins

Enjoy life on a leading UK university campus

No matter what subjects you choose to study at A level, you will be taught by leading professionals and informed by the latest research. As a Newton student, you will benefit from university facilities and talks from professors at the forefront of their fields.

Go further with your studies

UEA is globally recognised as a high performing university that excels in its teaching. It is a thriving global community that will support you in discovering who you are and who you want to be. You'll have access to many of the facilities that the University provides, including:

- 24/7 library
- Sportspark
- Sainsbury Centre for Visual Arts

Research that makes an impact

UEA is part of the nationally acclaimed Norwich Research Park. Focusing on health, food, development and the environment, this unique research facility explores everything from plant science, genetics and microbiology, to food science, gut biology and human health.

UEA believes that anything is possible when creative and forward-thinking people get together. People like you, who aren't scared to think outside the box. Award-winning scientists and authors have studied here, as well as many notable medics, business people and academics.

Your INTO Study Centre

Located on UEA's campus, the INTO Centre provides a safe environment where you will live, study and relax in a truly international community. The INTO Centre's facilities are spread over five floors in a university-style environment, and includes:

- a lecture theatre seating up to 80 students so you can experience lecture-style classes
- three well-equipped science laboratories
- breakout areas for socialising or group work
- an international INTO Café
- your accommodation in the same building

Become an independent learner

As well as having access to the University's library, information technology and computing services, the Centre has its very own Learning Resource Centre (LRC) which has:

- a collection of books and journals
- an area with computers for study
- friendly staff available to help you

UEA degree programmes

With a high-ranking UK league table position, UEA continuously measures its teaching standards to produce the next generation of creative thinkers and problem-solvers.

There are more than 300 degree programmes on offer in a range of subject areas, many of which are ranked highly in the UK and globally:

- 6th in the UK for Physiotherapy (The Complete University Guide 2023)
- 11th in the world for Development Studies (QS World University Rankings by Subject 2023)
- 12th in the UK for Medicine (The Complete University Guide 2023)
- UK top 15 for Accounting and Finance (Guardian University Guide 2023)
- UK top 15 for Pharmacology and Pharmacy (The Times and The Sunday Times Good University Guide 2023)
- World top 75 for Environmental Sciences (QS World University Rankings by Subject 2023)

For full details of the undergraduate degree programmes available at UEA, please visit: uea.ac.uk



UEA has a number of **generous scholarships** on offer for Newton students choosing to study at UEA. More information about these scholarships will be provided when you join the programme.

UK top 25

university

(The Complete University Guide 2024)

No.1

UK university for job prospects

(StudentCrowd 2022)

"The Newton A level teachers are friendly and willing to answer any questions that students have. They also ensure that you fully understand the concept they are teaching, which I found to be more useful and helpful compared with the purely exam-oriented teaching style which is more common in Hong Kong."

Emily, Hong Kong

Progressed to Medicine at the University of East Anglia

Achieved grades:



Dates and prices

The cost of your programme may vary depending on factors including the pathway chosen and programme length. The following guide to costs is based on pricing for the current academic year and provides an indication of the cost of attendance. For specific cost information, please refer online: intostudy.com/newton/courses

Estimated two-year cost of attendance based on prices for current students enrolled from 2023-2024

Study length	Tuition	Accommodation	Books	Airport pick up*	Insurance	Total
6 term	£51,600	£21,280	£0	£40 - £300	£617	£73,497
5 term	£43,000	£17,290	£0	£40 - £300	£537	£60,827

Start months and term dates for academic year 2024-25

Start month	Year 1	Year 2 provisional dates**
September (6 term)	Mon 23 Sep 2024 - Fri 13 Dec 2024	Mon 22 Sep 2025 - Fri 12 Dec 2025
	Mon 06 Jan 2025 - Fri 28 Mar 2025	Mon 05 Jan 2026 - Fri 20 Mar 2026
	Mon 07 Apr 2025 - Fri 27 Jun 2025	Mon 06 Apr 2026 - Fri 26 Jun 2026
January (5 term)	Mon 06 Jan 2025 - Fri 28 Mar 2025	Mon 22 Sep 2025 - Fri 12 Dec 2025
	Mon 07 Apr 2025 - Fri 27 Jun 2025	Mon 05 Jan 2026 - Fri 20 Mar 2026
		Mon 06 Apr 2026 - Fri 26 Jun 2026

Please note the prices shown are for the current academic year of 01 September 2023 - 31 August 2024 and are for indicative purposes only. For full details of term dates, please visit the relevant course page at: intostudy.com/newton/courses

* Please note: airport pickup is optional and not included in the total. Price is dependent on the arrival airport.

** Dates for Year 2 will be confirmed by the INTO Centre during Year 1 of the programme.

Apply online:
apply.intostudy.com

Apply via your local INTO education counsellor.
If you would like us to put you in contact with one of our counsellors please contact us.

Check to see if you're eligible for a scholarship:
intostudy.com/uea/scholarships

Discover more online

For students:

intostudy.com/newton

For education counsellors:

partnerportal.intoglobal.com/newton



Through innovative partnerships with leading universities, we expand opportunities for higher education, ensuring success and transforming the lives of our students and staff.

Education counsellor's stamp

Contact us

intostudy.com/en/contact

Visit the Centre:

newton@uea.ac.uk

or +44 1603 592 977

Connect with us



facebook.com/INTOUEA



myin.to/intoueavideos



instagram.com/intouea

© INTO UEA LLP, September 2023.

Every effort is made to ensure that the information provided in this document is correct at the time of publication. However, from time to time there may be occasions where some of the information has changed since the date of publication. The most up-to-date information can be found on our website at intostudy.com/uea - please refer to this before submitting your application. If, in our opinion, we consider that any change has been made which has a material impact on any offer that has been made to you to study with us, we will inform you of these changes in writing. The information provided in this document is subject to INTO University of East Anglia's terms and conditions, which can be accessed at intostudy.com/uea/terms

INTO UEA LLP, registered number: OC332020. Registered office: The Registry, University of East Anglia, Norwich, Norfolk, NR4 7TJ
Education provider sponsor number XNU1YRCC2