



# Your home in London

Live and study in the world's number one student city!

With a wide variety of accommodation options to suit every taste and budget, London is the ideal place to call home.

If you're over 18, you can choose from a wide range of options and [book through our trusted partner](#).

Under-18 students will benefit from living in our managed accommodation with dedicated support.

# Modern and secured accommodation for under 18s

## IQ Magenta House

Magenta House offers modern student accommodation in London's vibrant Whitechapel. You can walk to class in less than 15 minutes. Or walk 4 minutes to Aldgate East station for transport across the city.

Take a virtual tour around your accommodation



## Ensuite bedroom

**£400 per week\***

Get all the essentials for student living in this self-contained study bedroom. It's connected to a well-equipped shared kitchen, with access to a communal lounge and dining area.

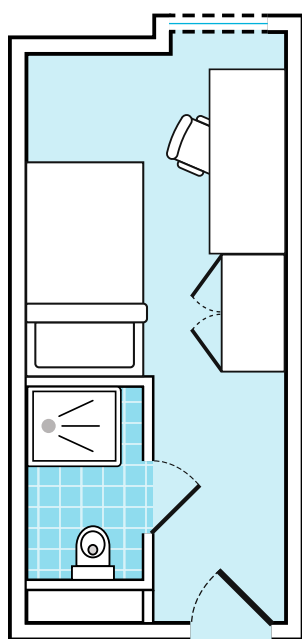
\* Based on a 51-week contract starting in September 2025 and a 34-week contract starting in January 2026.

## Bedroom

fully furnished with a small double bed, study desk, chair and clothing storage including a wardrobe and chest of drawers.

## Kitchen

includes a dining area, hob, oven and refrigerator shared with up to 6 students.



Sample floor plan



# Why choose our accommodation?

## 24/7 emergency line

Support is always available, including a 24-hour emergency helpline during out-of-office hours.

## Great location

Less than 15 minutes walk to the INTO centre and 30 minutes by tube to popular spots in Central London including Oxford Street, Chinatown and Westminster.

## Housekeeping

Regular cleaning for the common areas of the building only, such as the social spaces, reception and laundry room.

## Wellbeing

The onsite Accommodation Team is here to support you during your stay. They can help you live independently, make friends through social activities and offer wellbeing advice.

Learn more about your accommodation options.

For Business, Art and Social Sciences students

For STEM, Medicine and Health students





# What else is included?

## Utility bills

No extra charges for electricity, gas or water. Stay connected with free Wi-Fi.

## Shared spaces

Take some time out of your studies to hang out in common areas and social spaces. You can also use a study booth or room for quiet work and reading.

## Facilities

Wash your clothes in the laundry facilities (charges apply). The accommodation also has a secure bike storage.

## Free use of gym

Stay fit, healthy and energised throughout your studies with free use of our onsite gym.



# Experience the best of London life



# Your frequently asked questions, answered

## I'll be under 18 when I start my course. Where will I live?

If you're under 18, you must book and stay at our approved accommodation, IQ Magenta House.

## I'll be 18 or older when I start. What are my options?

If you'll be 18 or over when you join us, you can do one of the following:

- book accommodation using [Amber](#), who we've partnered with to help you find options close to the centre
- book accommodation directly with another provider of your choice.

## How can I book accommodation at Magenta House?

You can book your accommodation once you've applied for your pathway programme. Contact your Education Counsellor or your INTO Enrolment Support Officer to help you secure your room.

## Are all my bills included at IQ Magenta House?

Yes, all utility and Wi-Fi bills are included in the rent.

## When can I arrive at my accommodation?

You will be contacted by our Accommodation Team with the exact date that you can move in, and we encourage all students to move in before their course begins.

## Can my family or friends stay with me?

If you bring someone to help you move into your accommodation, they'll need to book a room at a hotel. Friends and family can't stay in your room with you.

## What will my address be?

You'll receive your address when your accommodation is confirmed. However, you'll only receive your specific room number when you arrive at your accommodation.

## Can I get food delivered?

Food deliveries are welcomed. Order groceries online from supermarkets such as Sainsbury's, Tesco Express and Tian Tian Market. Takeaway food is available via Uber Eats, Deliveroo or Just Eat.



Learn more about your  
accommodation options

**Got a question?**

Contact us at [intolondon@intoglobal.com](mailto:intolondon@intoglobal.com)

**Ready to book your accommodation?**

Contact your INTO Enrolment Support Officer  
or your Education Counsellor.

**INTO»LONDON**