



INVESTIN

THE ULTIMATE WORK EXPERIENCE



The Young **Investment Banker** Summer Experience **2026**



Ages 15-18
London | UCL Campus





Join us for the ultimate work experience in investment banking this summer in London.

Over the course of 2 weeks, students will step into the shoes of an investment banker through a range of immersive career simulations and exclusive professional site visits.

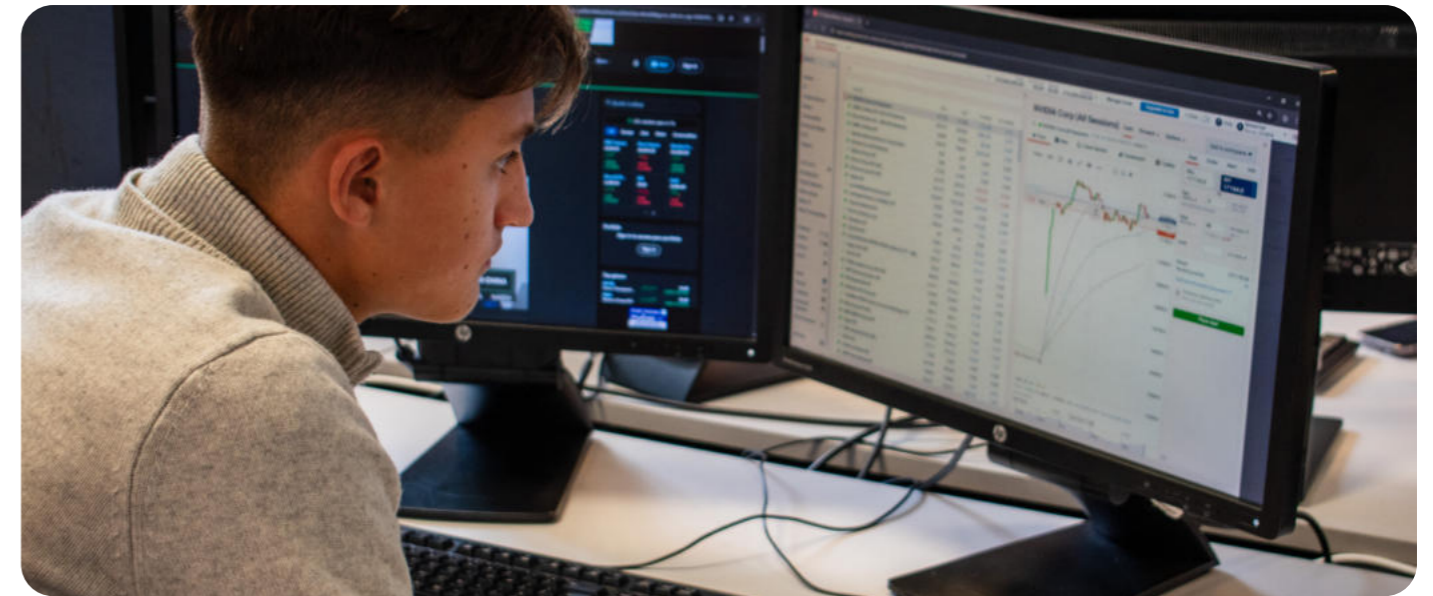
This is a unique opportunity to work alongside top bankers, gain hands-on experience to boost university and job applications and experience life on-campus at a world-renowned university, University College London.

Ages
15-18

Location
London, UCL Campus

Length
1 week or 2 weeks

Start Dates
6th July, 27th July,
17th August 2026



Programme Highlights

- Trade the London Stock Exchange live, in a world-leading trading simulation centre
- Hear directly from bankers and industry experts, gaining insider perspectives on how financial markets operate
- Visit venues in Europe's leading financial hub and some of the world's most competitive universities
- Showcase your skills in a hands-on assessment led by top professionals, receive feedback and expert career advice
- Gain a personalised certificate, industry reference letter and UCAS points for a Level 3 Qualification in Work Experience & Career Planning
- Network with a range of professionals and get your questions answered

"My son had a great experience with InvestIN and said he was taught a number of things he has never learnt in school before. We chose this programme as he didn't want an academic programme but rather a practical one and for him that meant trading the markets and learning from successful investment bankers."

Parent, the Young Investment Banker Summer Experience 2024

"My highlight was learning about pitching, I thought this was the most useful skill for my career. I also just generally found it useful to learn about all the different types of banking so I can explore what to go into in the future."

Student, the Young Investment Banker Summer Experience 2025

Sample Summer Experience Timetable

Week 1



Residential Package



Programme Content



Premium Content

	Sunday	Monday	Tuesday	Wednesday	Thursday	Friday
07:30 - 09:30	Breakfast					
10:00 - 10:30	Travel to venue					
10:30 - 13:00	Residential students arrive & check-in	Enter the Summer Experience and Career Coaching Programme welcome, network with peers and understand what it takes to break into banking	Introduction to the Trading Floor Explore the roles that make up the trading floors before implementing strategies to navigate market movements through a trading simulation	The Investment Spectrum Explore private equity, debt markets and asset management to see how institutions raise capital, manage assets and deliver value to investors	Introduction into Mergers and Acquisitions Discover the M&A process from valuation and strategy to negotiation and execution then test your skills in an interactive live deal simulation	Create Your Own Hedge Fund Step into a fund manager's role: Design your own hedge fund, apply investment strategies, manage risk and build a portfolio for success
13:00 - 14:00		Lunch Break				
14:00 - 17:00		The World of an Investment Banker Introduction into the face-paced environment of finance and the skills and knowledge needed for success	Pitching Masterclass Learn the essentials of pitching, focusing on voice and body language for effective communication	Continued	Bulge vs Boutique Banking Examine the differences between bulge bracket and boutique investment banks, gaining insight into their structures, client bases and career pathways	Introduction into Quant Finance Discover the fundamentals of quantitative finance in collaboration with AmplifyME
17:00 - 17:30	Travel to accommodation					
17:30 - 19:30	Dinner & Break					
19:30 - 22:00	Induction & icebreakers	Movie night	Board game café	Sports & games night	Wellness evening	Quiz night
23:00	Lights Out					

Weekend (Premium)

Weekend (Residential)

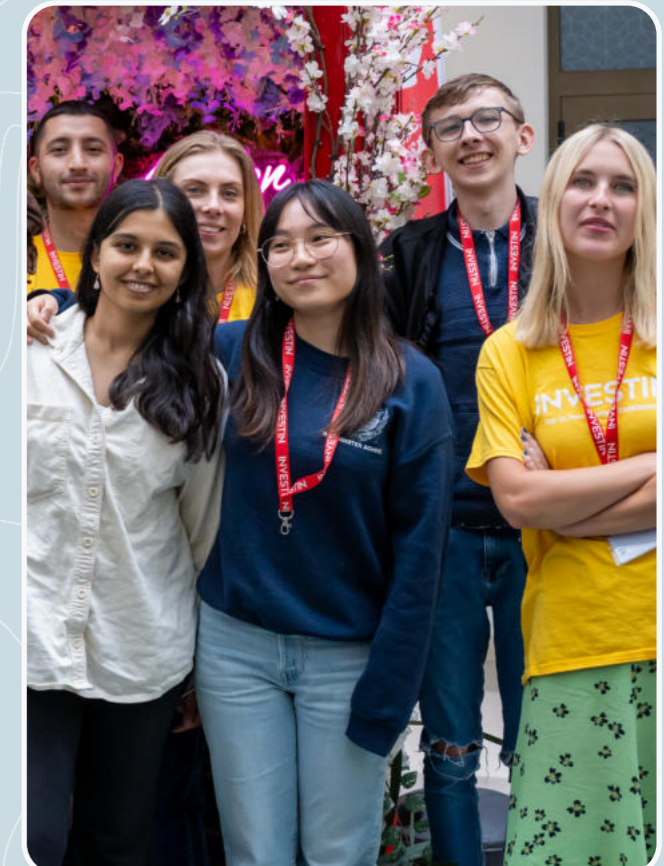
Saturday	Sunday	Saturday	Sunday	
Breakfast		Breakfast		
Immersive strategy game & workshop	Professional development coaching sessions	Week 1 Residential Students Check-Out	Break - Free time	
Lunch Break			Lunch Break	
Psychometric testing & personality profiling	Expert university admissions & recruitment coaching		London walking tour	Sports day at central London park
Dinner & Break			Dinner & Break	
Scavenger hunt	Crafts night	Scavenger hunt	Crafts night	
Lights Out		Lights Out		

WEEKEND - NON-RESIDENTIAL

Break - No Programmes

Week 2

	Monday	Tuesday	Wednesday	Thursday	Friday	Saturday	
07:30 - 09:30	Breakfast						
10:00 - 10:30	Travel to venue						
10:30-13:00	Sales Insights Gain insight into the sales function of investment banking, discovering how ideas are shaped into actionable opportunities	London Academy of Trading Join a trading competition with LAT after exploring ethics, governance, past failures and the value of professional networks	Continued	Fintech Forum Understand the impact of AI and technological advancements in the financial landscape, and create and pitch your own app to industry professionals	Assessment Centre Develop teamwork, leadership, problem-solving and communication skills through a mock assessment centre	2-Week Residential students check-out & depart	
13:00 - 14:00	Lunch Break						
14:00 - 17:00	Continued Gain insight into the sales function of investment banking, discovering how ideas are shaped into actionable opportunities	Continued	Continued	Continued	Graduation Ceremony Closing speeches & certificates		
17:00 - 17:30	Travel to accommodation						
17:30 - 19:30	Dinner & Break						
19:30 - 22:00	Film night	Sports & games night	Wellness evening	Karaoke night	Prom		
23:00	Lights Out						
			17:30 - 21:00	Gala dinner with professionals			



Exact start/end times of each day will vary. Students will receive their personalised timetables with specific locations and venues, as well as a finalised social programme schedule, closer to the programme start date.

Dates

	Accommodation Check-In	Programme Start Date	Week 1 Programme End Date	Week 1 Accommodation Check-Out	Week 2 Programme End Date	Week 2 Accommodation Check-Out
Intake 1	Sunday 5th July 2026	Monday 6th July 2026	Friday 10th July 2026	Saturday 11th July 2026	Friday 17th July 2026	Saturday 18th July 2026
Intake 2	Sunday 26th July 2026	Monday 27th July 2026	Friday 31st August 2026	Saturday 1st August 2026	Friday 7th August 2026	Saturday 8th August 2026
Intake 3	Sunday 16th August 2026	Monday 17th August 2026	Friday 21st August 2026	Saturday 22nd August 2026	Friday 28th August 2026	Saturday 29th August 2026

Fees

Length	Day Programme Fee	Residential Programme Fee
1 week	£2,225	£3,725
2 weeks	£3,275	£6,425
2 weeks + Level 3 Work Experience Qualification with UCAS points	£3,670	£6,820
2-week Premium (includes Level 3 Work Experience Qualification with UCAS points)	£4,400	£7,550

Add-On	Fee
Airport transfers <i>Available to/from Heathrow Airport only</i>	£300 return



What's included in programme fees?

	1-Week Summer Experience	2-Week Summer Experience	2-Week Premium Summer Experience
Hours of contact time with professionals	25	50	65
Hands-on career simulations	✓	✓	✓
Programme materials, equipment & resources	✓	✓	✓
Programme assessment & digital certificate	✓	✓	✓
On-site safeguarding & pastoral care	✓	✓	✓
Experience UCL campus	✓	✓	✓
Branded InvestIN merchandise	✓	✓	✓
Excursions to professional workplaces/venues	✓ Up to 2	✓ Up to 5	✓ Up to 5
Assessment centre		✓	✓
Graduation ceremony & physical certificate		✓	✓
Industry reference letter signed by professionals		✓	✓
Level 3 Award in Work Experience & Assessment for UCAS Points		Available as an add-on	✓
Experience LSE campus			✓
Professional development & university admissions coaching			✓
Psychometric testing & personality profiling			✓
Private Gala dinner & networking event with professionals			✓

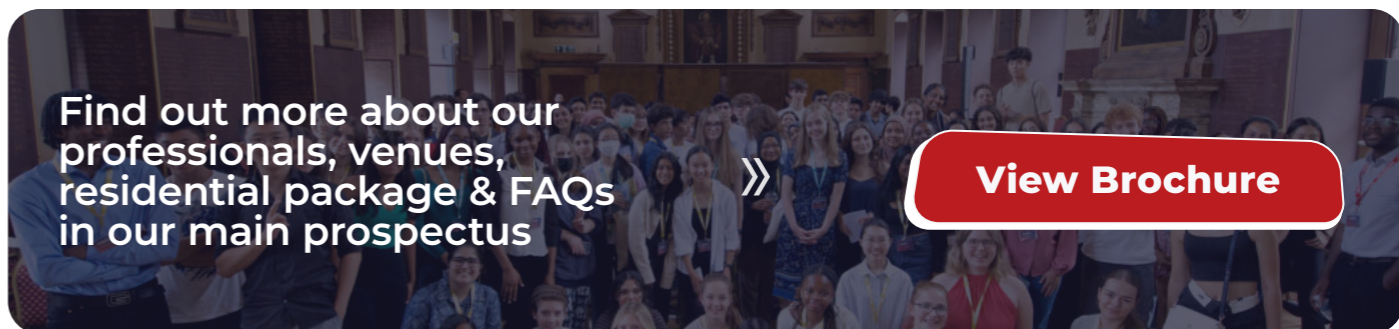
What's included in the Summer Residential Package?

	1-Week Summer Experience	2-Week Summer Experience	2-Week Premium Summer Experience
Private, single, ensuite bedroom	6 nights	13 nights	13 nights
Breakfast & dinner at accommodation canteen		✓	
Snacks & refillable water bottle		✓	
Travel to/from accommodation venue		✓	
Evening social activities		✓	
Weekend social activities			✓
24/7 safeguarding & pastoral support, including a designated Pastoral & Activity leader, Centre Managers & a medical office		✓	
Airport transfers to/from Heathrow airport			Available as an add-on

Find out more about our professionals, venues, residential package & FAQs in our main prospectus



[View Brochure](#)



How to Register

Registering for an InvestIN programme is a simple, straightforward process.

- ✓ **No application process**
Students don't require prior knowledge or experience in order to attend.
- ✓ **Places are limited**
We are typically fully booked for summer programmes by late spring.

1

Selection

Head to our website and choose your desired career, length and date of programme.

2

Payment

Pay in full online or secure your place by paying a non-refundable £950 deposit. Alternatively, contact us to pay via invoice.

3

Enrolment

You will be invited to complete a student enrolment form, so we can capture important information for your time with us, such as medical information, travel details and emergency contacts.

4

Pre-Programme

Once you have completed the student enrolment form, you will receive your pre-arrival pack, including your personalised timetable and materials.

5

Post-Programme

After you have attended a programme, you will receive a copy of the slides and content covered and be invited to complete an online assessment to receive your personalised certificate.

6

Stay in touch!

We love to hear what our alumni go on to achieve. Look out for future invitations to share your next steps with us.

Have questions? Not sure which programme is for you?

Our admissions team are here to help. Chat live via our website, www.investin.org, email us at info@investin.org or speak to us over the phone on + 44 (0) 203 488 5089.

**Register
Now**